

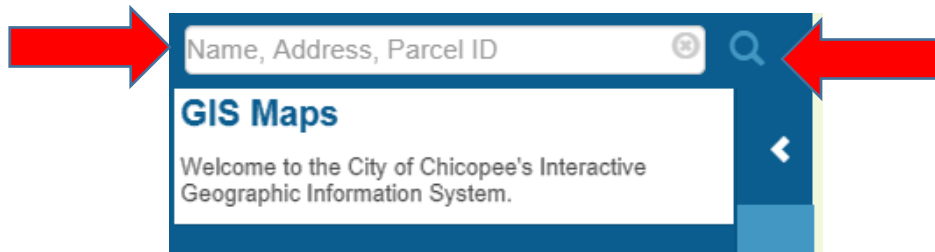
HOW TO USE THE CITY OF CHICOPEE GIS DATA VIEWER

June 2020

1. Go online to GIS viewer, https://hosting.tighebond.com/chicopeema_public/

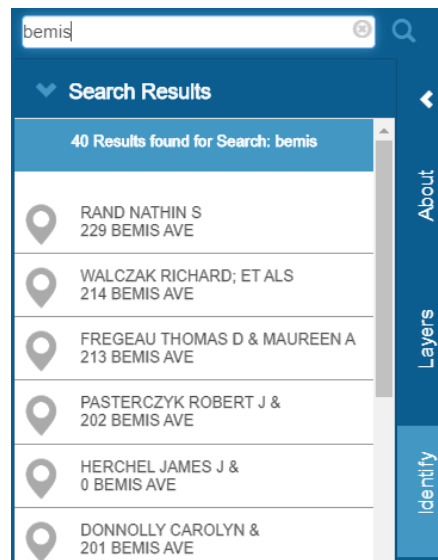
2. Locate the site of interest.

- Type an Owner Name, Address, or Parcel ID into the search box, then click the magnifying glass to initiate the search function.

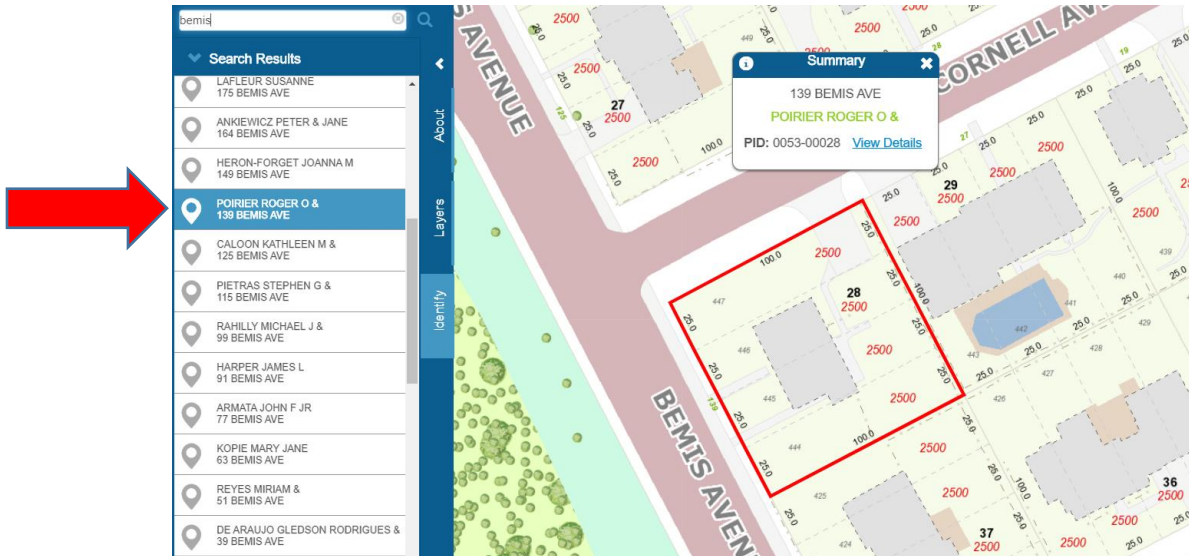


- You can also use the mouse wheel to manually pan to the location of interest in the map.
- Less detail in the search window provides better results, ex. Search "Bemis" instead of "Bemis Avenue".

- Evaluate the search results and identify the parcel of interest in search results window.

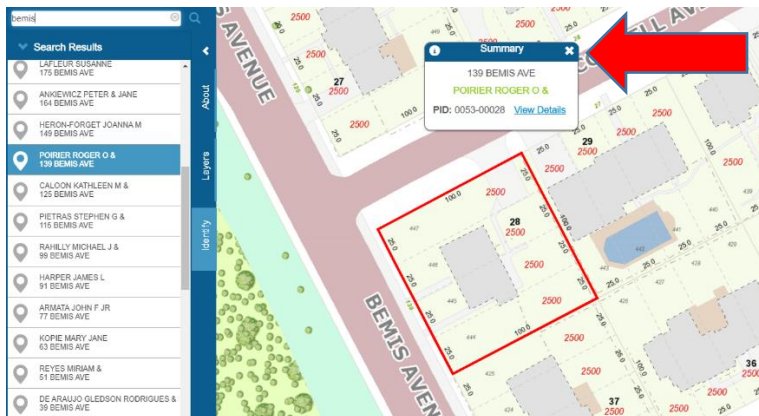


- Click on the parcel in the search results window and the map will zoom to that location.

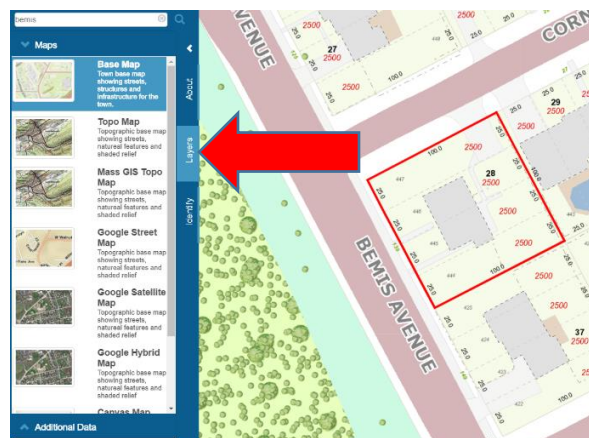


3. Format the Map

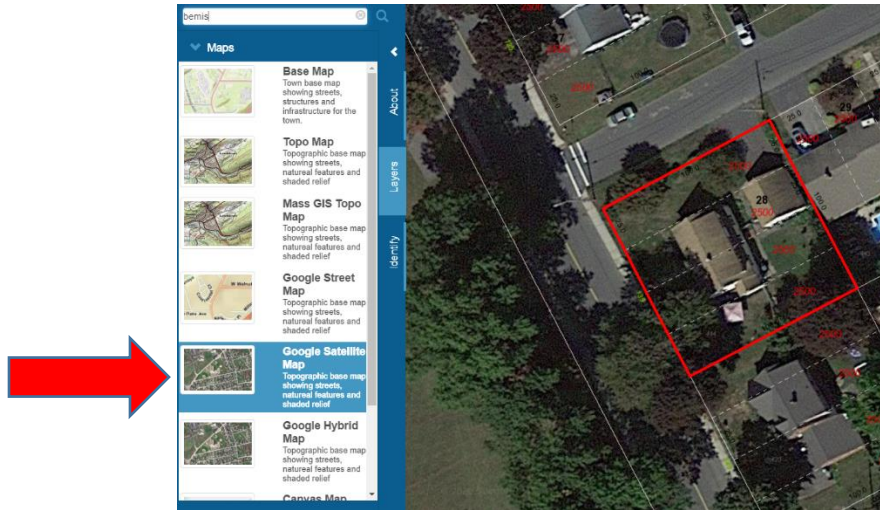
- Close the parcel summary box by clicking the “x” in the upper right hand corner.



- Turn on the aerial maps by clicking on the “Layers” tab.



- Select the “Google Hybrid Map” from the Map Gallery tab. The aerial photos turn on in the map view.



- Use the mouse to zoom in and center on the parcel of interest in the map.



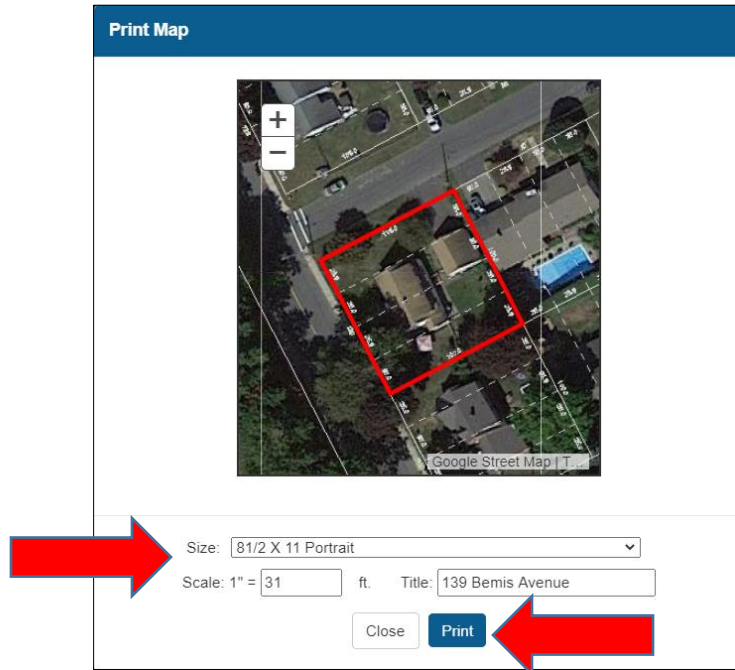
i You can turn off text layers on the “Additional Data” tab if desired, but is not required.

4. Create the PDF

- Click on the Printer icon at the bottom of the tools window.



- The Print window opens. Use the options to select a size for the PDF, adjust the location, and type in the address as the title of the map. Once the options are completed click on the “Print” button.



- i** - Once you click the print button the site takes a minute to create the PDF. Do not click on additional buttons while the site is working. The PDF will open in a new window once it is ready.
- The pop up blocker **MUST** be disabled on your computer otherwise the new window with the PDF is blocked from opening.

- Once the PDF opens in the new window you can save, download, or print the PDF at your discretion.

